



Santa Rosa Blue Hole Center

Blue Hole appears in the midst of the high mesa desert like a great blue gem. Once known as Blue Lake, it is one of seven sister lakes connected underground by a vast system of water. This wonder defines Santa Rosa even as it seems to defy the surrounding red mesas.



Blue Hole, jewel of the City of Natural Lakes

Blue Hole was born of a geological phenomenon called the Santa Rosa Sink. The place is magic—as water always is in a land of little rain. Nomadic tribes, cowboys driving their dogies cross the Pecos, and Americans going west on the Mother Road, Route 66, all sought respite here.

In 1931 Blue Hole became a WPA fishery and morphed into the Blue Hole Recreation Area in the seventies. Most recently the City of Santa Rosa expanded the area to include the Blue Hole Dive and Conference Center. Not just for drivers wanting to get out of the fast lane or divers eager to get on down, it's more than just a watering hole. Now it's a destination meeting site for everyone from brides to board chairs: halfway between Albuquerque and Amarillo, it's within two hours' drive of 80 percent of all New Mexicans.

Still, we never forget that the real sapphire is the incredible beauty of the Blue Hole itself. The lake is

unsurpassed for its clear, pure water. That's why we work so hard to protect it, ensuring, for example, that surface runoff won't impair its purity. Like out-of-state scuba divers who drive ten hours to get here, we know it's the crystalline water that draws them in. Visibility is an astonishing 100', due to the fact that the water completely renews itself every six hours—it's truly never the same lake twice. What doesn't change is the temperature—a constant 62 degrees, ideal for storing a fine Cabernet or tossing in the kids on a hot summer's day. Within a few minutes of exiting the interchange, they'll literally be climbing the walls—the lovely rock surrounds of Blue Hole, that is—and jumping in.

You don't have to be a diver, a kid, or even a fluvial geomorphologist to appreciate the uniqueness of Blue Hole. History buffs love it here, too. Whether you're exploring the Wild West or checking out the classic cars at the Route 66 Auto

Blue Hole provides family swimming fun year-round. Scheduled hours are posted at the Center. Though aquatic life is abundant at Blue Hole, fishing is not allowed.

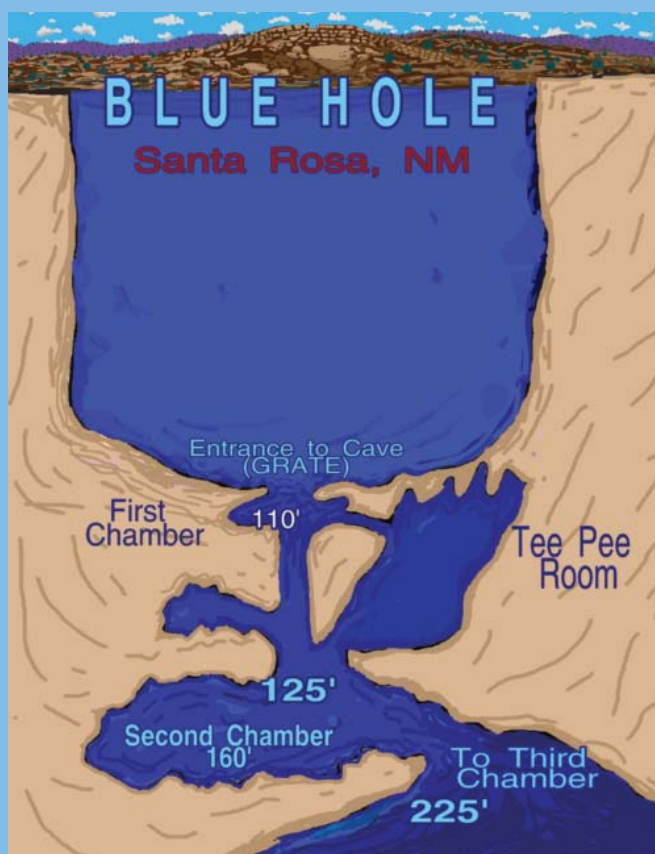


Museum, there's lots to discover—like the nearby railroad bridge which featured Henry Fonda as train-hopping Joad in the film based on John Steinbeck's *The Grapes of Wrath*.

Adrenalin junkies can head for nearby Santa Rosa Lake to waterski or windsurf. Or just catch some trout, perhaps, or pitch a tent at Santa Rosa State Park. Others swear by our nine-hole community golf course. But if you think golf is a good walk ruined, the course is also a gold mine for bird watchers.

Head out instead on paved trails for biking or hiking. Or go further afield and meander along the paths, bridges, and sidewalks of our Pecos Sunflower Wetlands Preserve where you'll spot eagles, cormorants, and blue herons. In winter, watch for sand hill cranes and other migrating species.

We're known for our small-town warmth and professional hospitality. We take pride in seeing romantic weddings, memorable reunions, and joyous graduations go off without a snag. We'll help arrange the extras, too—horseback riding, jeep tours, or cowboy suppers—that ensure everyone will have the time of their lives.



The Santa Rosa National Fish Hatchery was established at the Blue Hole in 1931 for the purpose of producing warm water fish for waters in New Mexico and western Texas. In the 1950s production of trout was undertaken for stocking Native American tribal waters of the Southwest.



Scuba diving in the desert?

BLUE HOLE DIVE CENTER

Okay, so it's not the Great Barrier Reef—but Blue Hole does offer a few advantages: no sharks or riptides! (It does contain fish.) All kinds of groups—from professional divers, search and rescue, to college students to military and municipal groups—scuba here, agreeing that Blue Hole is the best inland training spot in the country. The diving experience is as safe and pristine as it gets. There's great wall diving, two underwater decompression platforms, and a surface boat simulator.

So dive in! Soon those champagne-like bubbles will be rising to the usually silent surface of Blue Hole, and you will experience the serenity and clarity that makes checkout dives especially successful. Or head over to Perch Lake and dive down to a submerged twin-engine plane. Although Blue Hole is actually busier in winter than

summer—and weekends are even busier—you can also request weekday and even night-time dives.

Afterwards, enjoy a shower and relax in our new Warm Room. Or just strategize and review in one of the dive training rooms, and tank up at our on-site dive shop. Most folks spend the night nearby after a dive so they can better adjust to pressure changes. This is high-altitude diving at its best, with its corresponding challenges. Bring your training group and certify for:

- Open Water
- Advanced Open Water
- Rescue
- Dive Master
- Diving Instructor

Blue Hole offers the best scuba diving training facilities in the region. Two underwater training platforms are located at 20 and 25 feet below the surface.





TRUTH IS STRANGER THAN FICTION

- 3000 gallons of water outflow every minute from Blue Hole.
- Blue Hole's surface elevation is 4620 ft. making it equivalent to diving at 100 feet. of depth at sea level.
- Underground caverns might run clear to Texas, but you can't get there from here.
- A twin-engine plane is parked at the bottom of Perch Lake—just for fun.
- Blue Hole is open 365 days a year during daylight hours.
- Blue Hole is 80 feet deep—and then some—and shaped like a bell.



A naturally wonder-full location for meetings and reunions.

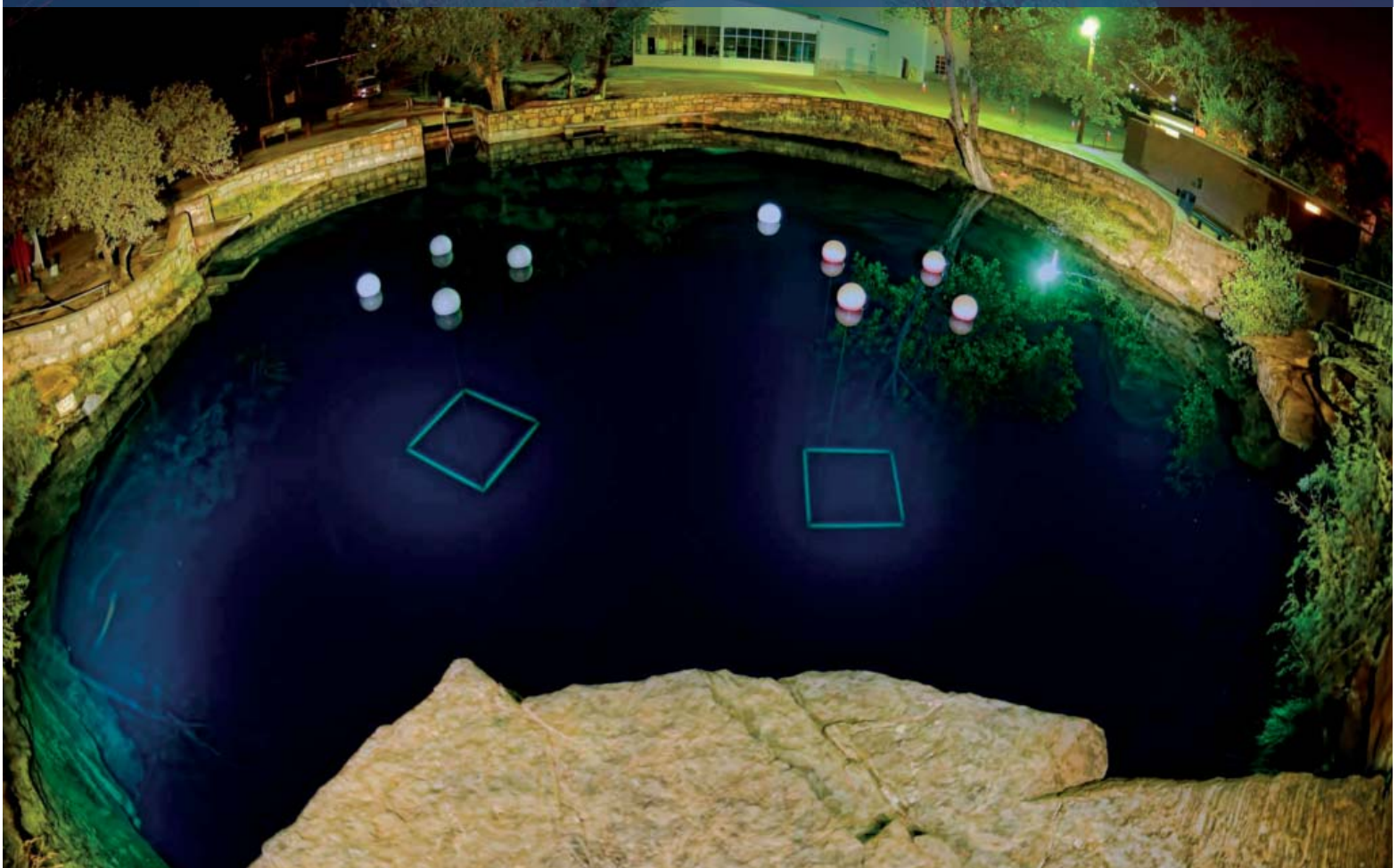
BLUE HOLE CONFERENCE CENTER

With 10,000 square feet of exhibition hall and ballroom space (a total of 17,000 square feet including a fully-equipped commercial kitchen), we've got you covered. Our three new conference spaces, combined with sixteen local restaurants and twenty-one hotels, all within five minutes of the center, provide a smorgasbord of spaces and places to choose from. Our staff will help you find the professionals you need to plan and implement your retreat, meeting, or celebration.

BLUE HOLE VISITOR CENTER

Welcome! Whether you're a returning guest or a first-time visitor, we'd love to share our affection for the Santa Rosa/Blue Hole area with you and show off our Conference and Dive Center. Here for a quick dip? Want to consider fresh options for your upcoming gathering and tour our facilities? Or maybe you're curious about the fascinating history, culture, geology, and environment of the area. Watch a quick film on the Route 66 Driving Tour, check out our exhibits, use our internet, grab a snack or Blue Hole merchandise, get your dive permit or New Mexico Fishing License. Weekdays 8-5 and Saturdays 9-2. Stop on by!

Below, view of Blue Hole under night light. At right, the ballroom set up for a wedding reception and for a multi-state organization meeting.

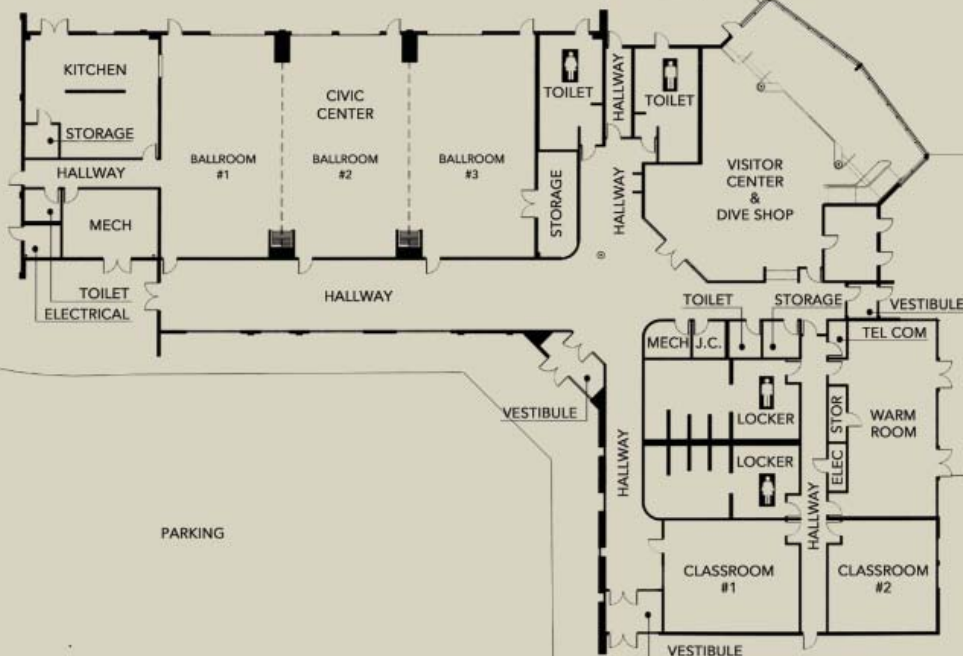




BLUE HOLE CENTER	Square Feet	Dimensions	Classroom Capacity	Banquet Capacity	Exhibit Booths 10 x 10	Ceiling Height
Exhibit Hall	4,000	49 x 82		300	50	25
1/3 Exhibit Hall	1,320	49 x 27		100	12	25
2/3 Exhibit Hall	2,690	49 x 55		200	25	25
Dive Conference Room	1,950	39 x 50	70	100	10	20
Blue Hole Room	600	25 x 24	25	30	6	14
Dive Training Warm Room	817	43 x 19	40	N/A	N/A	14
Commercial Kitchen	780	27 x 29	12	N/A	N/A	14
Rock Lake Room	750	25 x 30	50	40	8	14
Concourse	1,400	15.5 x 90	N/A	N/A	12	14



1085 Blue Hole Road, Santa Rosa, NM 88435
575-472-3763 www.santarosanm.org



Santa Rosa

New Mexico

The City of Natural Lakes



MUST-SEE SITES

- Old Santa Rosa and historic railroad district
- Saint Rose Chapel
- Route 66 Auto Museum
- Vintage neon art along Route 66
- Scenic drive along the canyons of the Pecos to Puerto de Luna
- Coming attraction: Ifeld Warehouse, built in 1902, opens soon as a visitor interpretive center.



Area Legend

- U.S. Highways
- Historic Roads
- State Highways
- County Roads
- Interstate Highways
- Secondary Roads
- Primary Roads
- Unpaved Roads
- Railroads
- Historic Marker
- Public Restrooms

MAPS BY JEFFREY BERGMAN, JEFFREY BERGMAN INC. THIS MAP MAY NOT BE REPRODUCED IN ANY MANNER WITHOUT WRITTEN CONSENT FROM JEFFREY BERGMAN INC. 375.728.847

Santa Rosa
Blue Hole Center

NEW MEXICO *True*
Co-op Participant

1085 Blue Hole Road, Santa Rosa, NM 88435
575-472-3763 www.santarosanm.org

Front cover photography by Curt Bowen and back cover by Laurence Parent.
Blue Hole photography by Curt Bowen, Jennifer Gzybowski, Richard Gzybowski,
Robin Tackett, and New Mexico Tourism Department, Mike Stauffer.